

**INSTRUCTION MANUAL OF
LIMIT SWITCH (TL-W TYPE)**

DATE : 2016.12.29
FILE No: TLW00001
PAGE : 1 of 3

CAM TYPE LIMIT SWICH

⊙ TL – W R8N



(FORMER, T.H. ELEMA ENG. CO., LTD.)

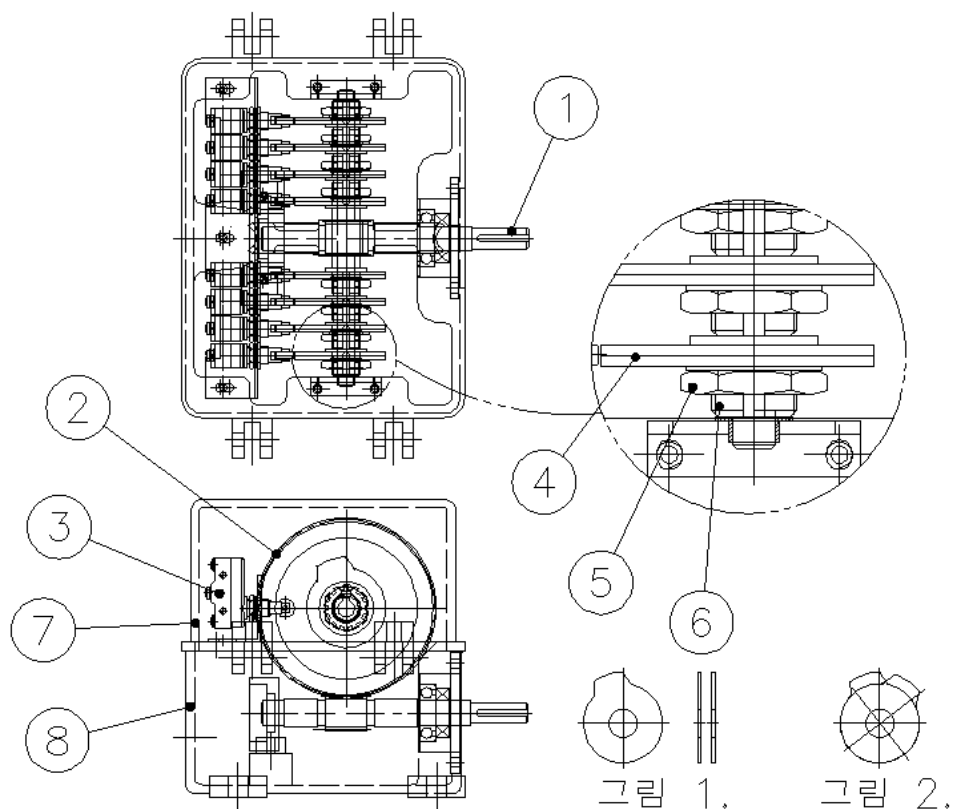
TEL : +82-31-498-9270

FAX : +82-31-433-5986

1. OPERATION CONCEPT

THE WORM GEAR TYPE LIMIT SWITCH IS DESIGNED BY USING THE CONCEPT OF WORM AND WORM WHEEL, WHEN THE INPUT SHAFT OF WORM(1) TRANSMITS THE RPM FROM OUTSIDE TO WORM WHEEL(2), THE SWITCH IS ACTIVATED BY THE ROTATION OF CAM(4) WHICH IS ATTACHED AT WHEEL SHAFT. THERE ARE 3 KINDS OF REDUCTION RATIO (1/25,1/50, 1/100) AND THE ANGLE OF CAM(4) IS USED WITHIN 300°.

2. SCHEME



NO	ITEM	NO	ITEM
1	WORM(INPUT SHAFT)	5	CAM ADJUST NUT
2	WORM WHEEL	6	CAM ADJUST BRACKET
3	MICRO SWITCH	7	COVER
4	CAM	8	CASE

INSTRUCTION MANUAL OF LIMIT SWITCH (TL-W TYPE)

PAGE : 3 of 3

3. CAM ADJUST

BEING COMBINED WITH TWO CAM(4) AS SEEN ON PICTURE 1, CAM(4) CAN BE FUNCTIONED AS YOU ADJUST TO INCREASE JOINT ANGLE OF TWO AS PICTURE 2. REGARDING ADJUSTING METHOD, YOU CAN USE CAM ADJUST BRACKET(6) TO FASTEN CAM AT ONE SIDE AS SEEN PICTURE AND CONTROL THE LEVEL YOU WANT BY FASTENING OR UNFASTENING CAM ADJUST NUT(5) ON THE OTHER SIDE. AND MAKE SURE NUT NOT TO BE LOOSE BY USING ROCK WASHER BENDING A LITTLE TO NUT.

4. STANDARD

- 1) POINT OF CONTACT : 8c
- 2) SWITCH TYPE : ME-3
- 3) CONTACT CAPACITY : AC 125V / 15A
AC 250V / 10A
- 4) TYPE

TYPE	GEAR RATIO	APPLICABLE REV.
TL-W100R8	1/100	80
TL-W050R8	1/50	40
TL-W025R8	1/25	20