

FORK TYPE LIMIT SWITCH

● TL - LA



(FORMER, T.H. ELEMA ENG. CO., LTD.)

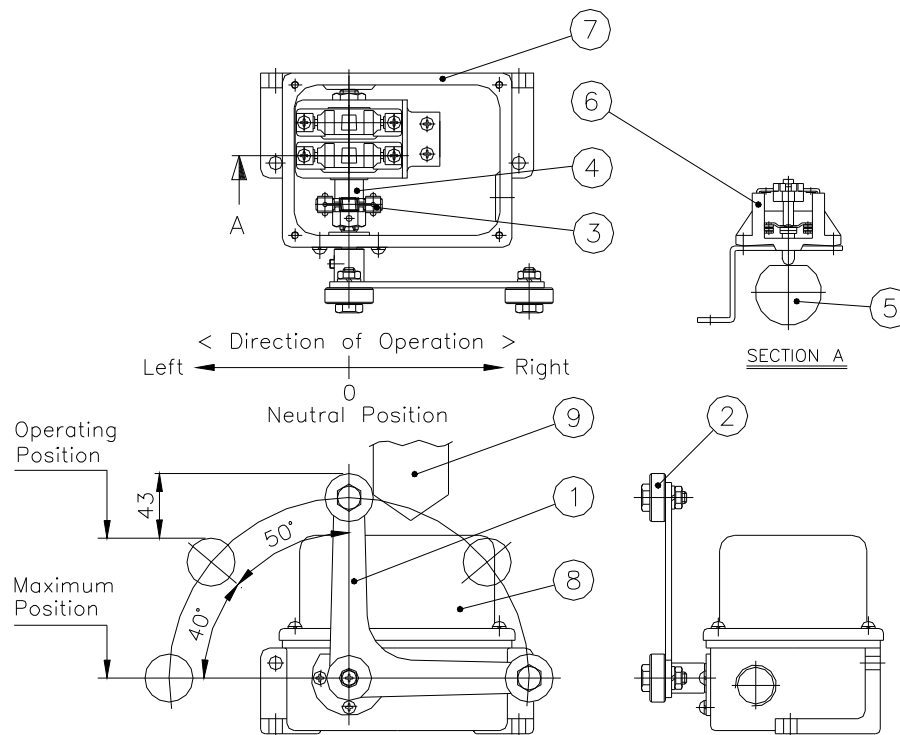
TEL : +82-31-498-9270

FAX : +82-31-433-5986

1. OPERATION CONTACT

MANUAL RETURN TYPE-LIMIT SWITCH IS A DEVICE THAT THE LEVER IS HELD ON AT OPERATING POSITION BY INTERLOCK(3) FUNCTION AFTER TURNING 90° WHEN STRIKER(9) OPERATES THE LEVER(1).

2. SCHEME



N o.	N A M E	N o.	N A M E
1	LEVER	6	SWITCH
2	ROLLER	7	CASE
3	INTERLOCK	8	COVER
4	CAM SHAFT	9	STRIKER
5	CAM		

3. STANDARD SPECIFICATION

- 1) Point of Contact : 2b
- 2) SWITCH TYPE : ME-3
- 3) CONTACT CAPACITY : AC 125V / 15A
AC 250V / 10A