

## **FORK TYPE LIMIT SWITCH**

● TL - LB



**HANMI TECHWIN**

**(FORMER, T.H. ELEMA ENG. CO., LTD.)**

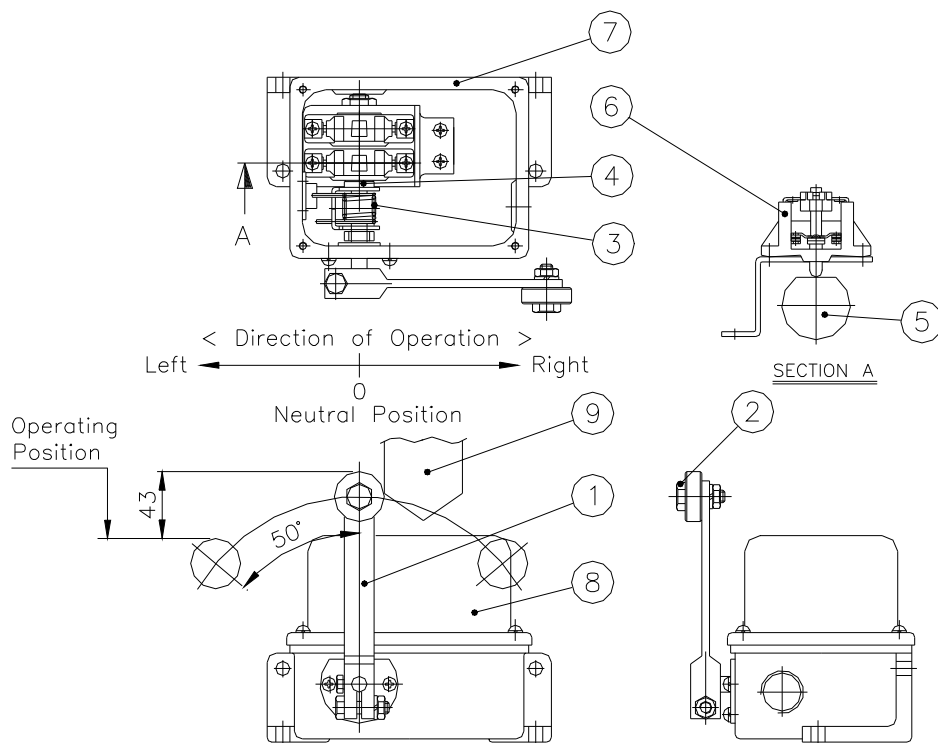
**TEL : +82-31-498-9270**

**FAX : +82-31-433-5986**

## 1. OPERATION CONTACT

STRIKER (10) operates LEVER (1), the automatic return type limit switch is connected to LEVER CAM SHAFT (4) rotates, the SWITCH is operated, and when the STRIKER is deactivated It is returned to the NORMAL state by the return spring (3) attached to the CAM SHAFT.

## 2. SCHEME



N o.	N A M E	N o.	N A M E
1	LEVER	6	SWITCH
2	ROLLER	7	CASE
3	RETURN SPRING	8	COVER
4	CAM SHAFT	9	STRIKER
5	CAM		

## 3. STANDARD SPECIFICATION

- 1) Point of Contact : 2b
- 2) SWITCH TYPE : ME-3
- 3) CONTACT CAPACITY : AC 125V / 15A  
AC 250V / 10A