

**INSTRUCTION MANUAL OF LIMIT SWITCH  
(TL-LC TYPE)**

DATE : 2018.01.10  
FILE No. : TLLC0001  
PAGE : 1 of 2

**CROSS LEVER TYPE LIMIT SWITCH**

● TL - LC



**HANMI TECHWIN**

**(FORMER, T.H. ELEMA ENG. CO., LTD.)**

**TEL : +82-31-498-9270**

**FAX : +82-31-433-5986**

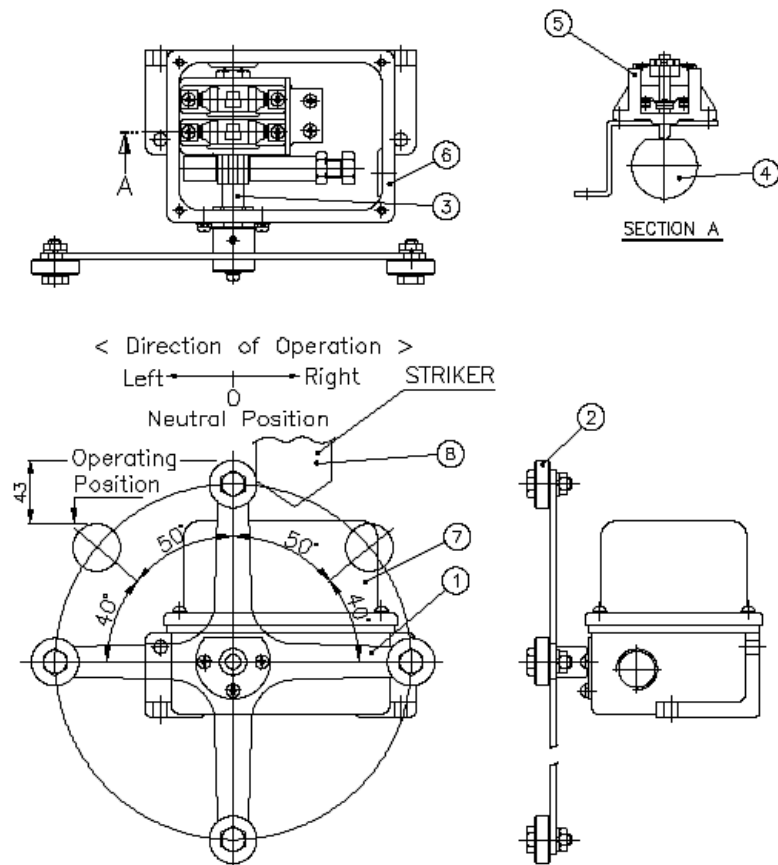
# INSTRUCTION MANUAL OF LIMIT SWITCH (TL-LC TYPE)

PAGE : 2 of 2

## 1. OPERATION CONCEPT

WHEN THE STRIKE (8) ACTIVATES LEVER(1) THE CAM ATTACHED ON THE CAM SHAFT(3) ROTATES 90°, BY THIS ROTATION OF CAM(4) THE CROSS LEVER TYPE L/S(5) IS ACTIVATED.

## 2. SCHEME



N O	I T E M	N O	I T E M
1	LEVER	5	SWITCH
2	ROLLER	6	CASE
3	CAM SHAFT	7	COVER
4	CAM	8	STRIKER

## 3. STANDARD

- 1) POINT OF CONTACT : 2b
- 2) SWITCH TYPE : ME-3
- 3) CONTACT CAPACITY : AC 125V / 15A  
AC 250V / 10A