

# **INSTRUCTION MANUAL OF LIMIT SWITCH (TL- G TYPE)**

DATE : 2018.01.10  
FILE No: TLG00001  
PAGE : 1 of 2

## **WIEGHT TYPE LIMIT SWICH**

⊙ **TL - G**



**HANMI TECHWIN**

**(FORMER, T.H. ELEMA ENG. CO., LTD.)**

**TEL : +82-31-498-9270**

**FAX : +82-31-433-5986**

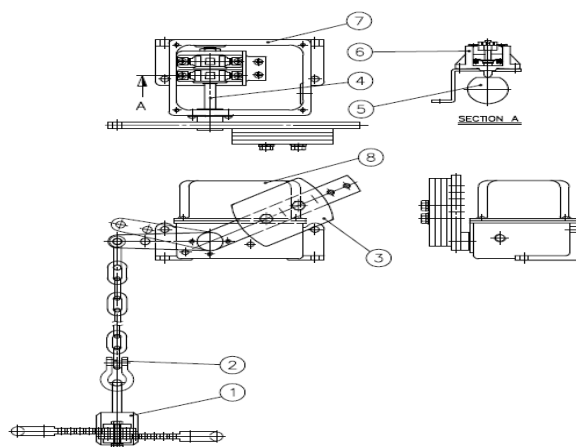
# INSTRUCTION MANUAL OF LIMIT SWITCH (TL-G TYPE)

PAGE : 2 of 2

## 1. OPERATION CONCEPT

THE WEIGHT TYPE LIMIT SWITCH IS USED FOR THE PROTECTION OF OVER HOISTING, BY USING THE WEIGHT HUNG WITH WIRE ROPE ON THE OPPOSITE SIDE OF WEIGHT(3) THE LIMIT SWITCH IS KEPT NORMAL STATE AS LIKE SECTION A. IN CASE THE WEIGHT(1) IS LIFTED WHEN THE HOISTING DEVICE IS REACHED AT LIMITED LEVEL, THE EQUILIBRIUM STATE OF WEIGHT(3) IS UNBALANCED, AND THE CAM(5) WHICH IS FIXED AT CAM SHAFT(4) IS TURNED TO TILTING DIRECTION OF WEIGHT AND THEN THE SWITCH(6) IS ACTIVATED.

## 2. SCHEME



N O	I T E M	N O	I T E M
1	WEIGHT	5	CAM
2	WIRE ROPE	6	SWITCH
3	WEIGHT	7	CASE
4	CAM SHAFT	8	COVER

## 3. STANDARD

1) POINT OF CONTACT : 2b

2) SWITCH TYPE : ME-3

3) CONTACT CAPACITY : AC 125V / 15A

AC 250V / 10A