

OVER SPEED SWITCH

◎ TL - C2



HANMI TECHWIN
(FORMER, T.H. ELEMA ENG. CO., LTD.)
TEL : +82-31-498-9270
FAX : +82-31-433-5986

1. OPERATION CONCEPT

OVER SPEED SWITCH prevents over speed by using mechanical centrifugal weight (WEIGHT)

As the device, you can adjust the SETTING RPM according to the synchronous speed of the motor.

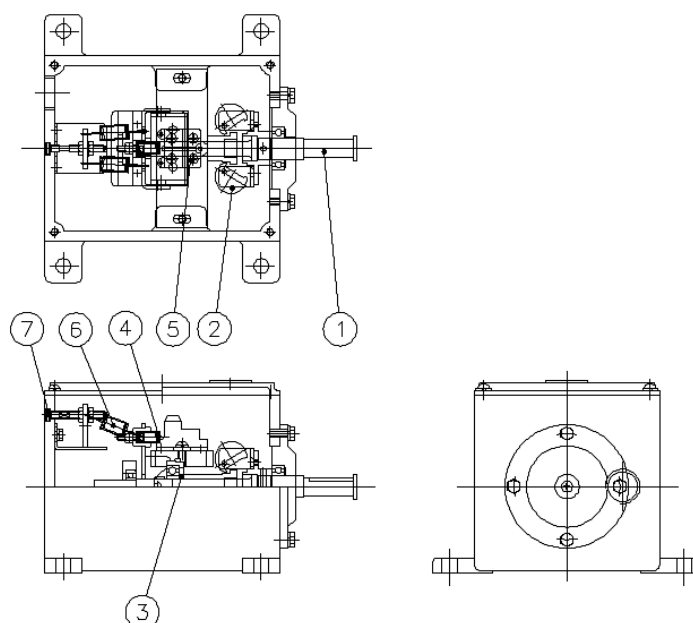
Generally, it is installed on the half-load side of the motor,

When reached, WEIGHT (2) moves in the direction of arrow by centrifugal force and MOVING

Push the SHAFT (3) and the LIMIT SWITCH (5) is activated by the PUSH PIN (4).

MOTOR POLE수	SETTING RPM
6 P	1560
8 P	1170
10 P	940

2. SCHEME



품 번	품 명	품 번	품 명
1	SHAFT	5	MICRO LIMIT SWITCH
2	WEIGHT	6	TENSION SPRING
3	MOVING	7	RPM ADJUSTING BOLT
4	PUSH PIN		

3. STANDARD

- 1) POINT OF CONTACT : 1a + 1b
- 2) LIMIT SWITCH TYPE : KH-9010
- 3) CONTACT CAPACITY : AC 125V / 15A
AC 250V / 10A