

**TACHO GENERATOR**  
**& OVER SPEED SWITCH**

● TL - TCN



**HANMI TECHWIN**  
**(FORMER, T.H. ELEMA ENG. CO., LTD.)**

**TEL : +82-31-498-9270**

**FAX : +82-31-433-5986**

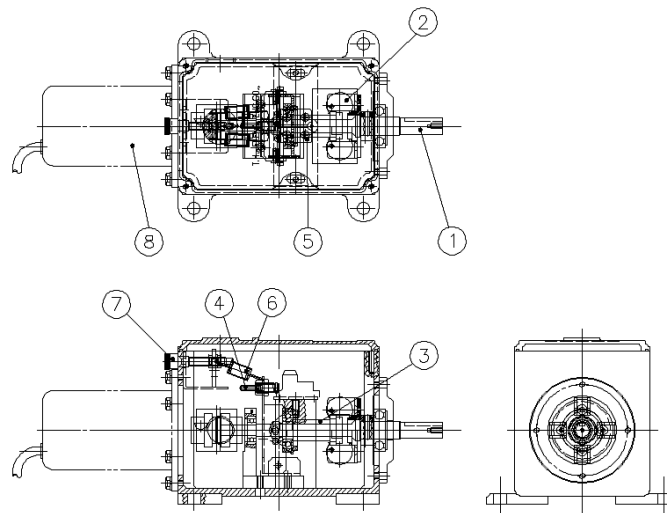
# INSTRUCTION MANUAL OF LIMIT SWITCH (TL-TCN TYPE)

PAGE : 2 of 2

## 1. OPERATION CONCEPT

THE TACHO GENERATOR & OVER SPEED SWITCH IS THE DOUBLE PROTECTION DEVICE FOR THE OVER SPEED WHICH IS USING THE MECHANICAL WEIGHT AND ELECTRICAL TACHO GENERATOR. THE SETTING RPM OF IT CAN BE ADJUSTED IN ACCORDANCE WITH THE MOTOR RPM. WHEN THE SHAFT RPM OF SWITCH IS REACHED AT THE LIMITED LEVEL AND THE WEIGHT(2) IS MOVED TO ARROW DIRECTION DUE TO CENTRIFUGAL FORCE AND PUSH THE MOVING SHAFT(3), AND THEN BY THE PUSHING PIN(4) THE OVER SPEED SWITCH(5) IS ACTIVATED. BY USING THAT THE RPM IS IN PROPORTION TO THE VOLTAGE, THE ROTATING RPM OF TACHO GENERATION CAN BE DETECTED.

MOTOR POLE수	SETTING RPM
6 P	1560
8 P	1170
10 P	940



## 2. SCHEME

N O	I T E M	N O	I T E M
1	INPUT SHAFT	5	MICRO LIMIT SWITCH
2	WEIGHT	6	TENTION SPRING
3	MOVING SHAFT	7	RPM ADJUSTE BOLT
4	PUSH PIN	8	TACHO GENERATOR

## 3. STANDARD

- 1) POINT OF CONTACT : 1a + 1b
- 2) LIMIT SWITCH TYPE : KH-9010
- 3) CONTACT CAPACITY : AC 125V / 15A  
AC 250V / 10A

**HANMI TECHWIN**